

AR5952L Human Ecology | Space & Health SPECIAL

Assignment 1

Saloni Sehgal

A0198835J

## LITTLE INDIA ARCADE

Location: Serangoon Road



*image source: flicr.com*

# little india, singapore

## street sensory experience

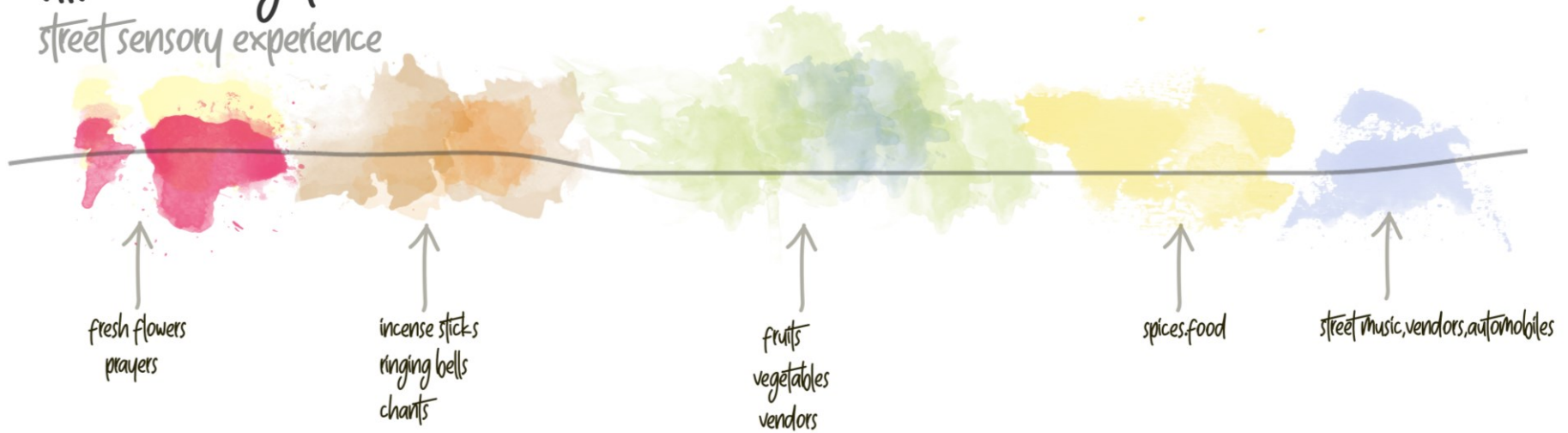


image source: roots.sg



CLICK FOR AUDIO





Graphic art portraying the sensory experiences that can be perceived along the streets of Little India.





*image source:flickr.com*

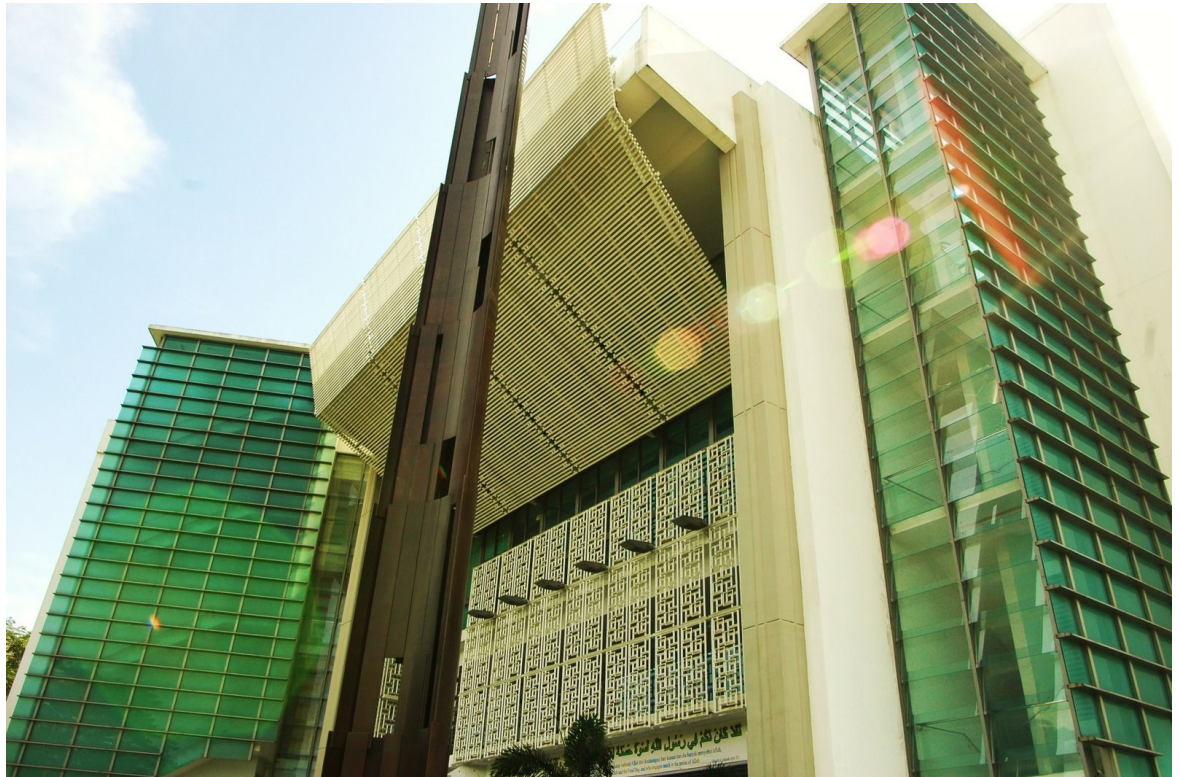
With boomboxes blasting music at every shop, and spices pervading the air throughout, Little India is a multi-sensory experience. The colors and intimate scale of sidewalks invoke cerebral emotions at every nook and corner.

## ASSAFAYAAH MOSQUE

Location:Admiralty Lane

GFA:3,490 Sqm

Year Completed:2004





# assafayah mosque

sensory experience

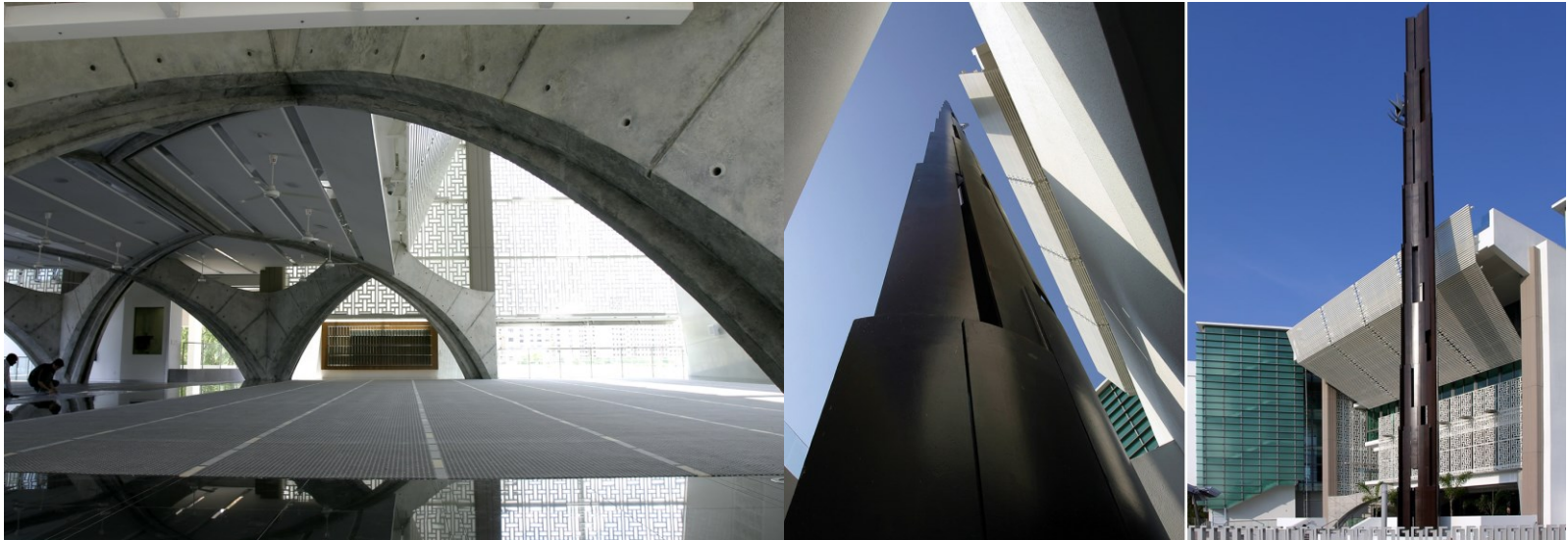
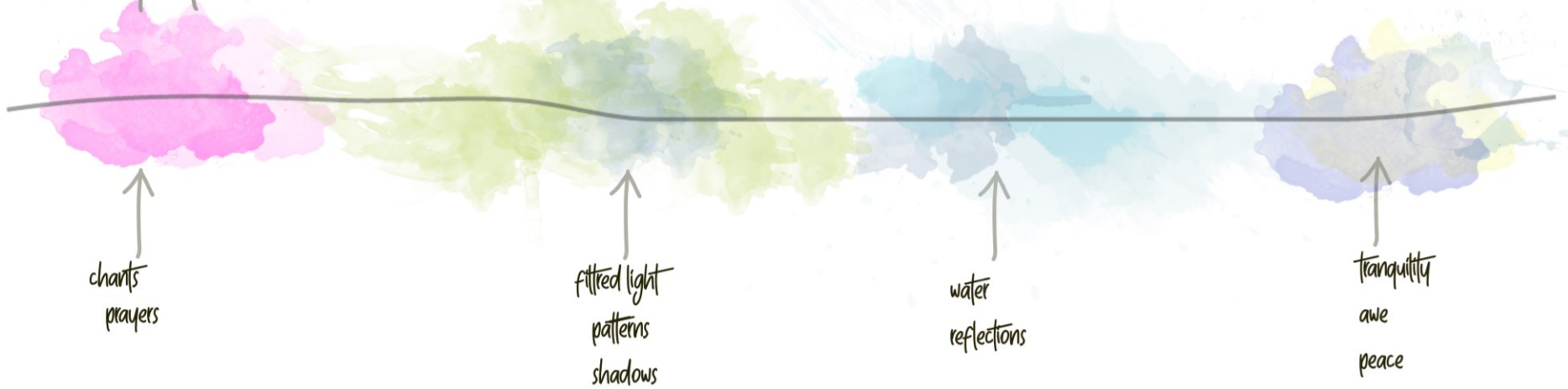
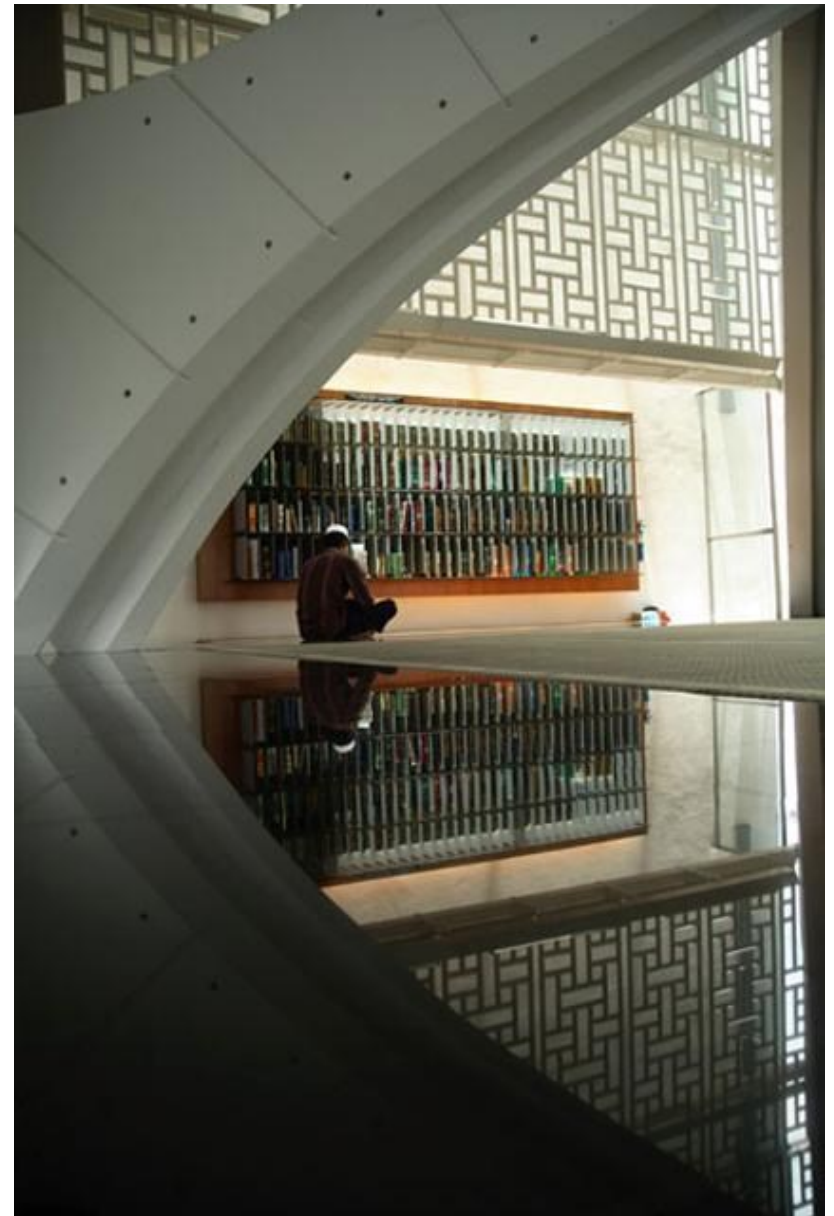


image source: [forumarchitects.com](http://forumarchitects.com)

## **ROLE OF WATER**

Recognising that historical imagery can evoke cerebral and cultural connections, the design of this mosque adapted traditional elements to create contemporary versions of the arch, the minaret and the arabesque.

The sound of water creates a tranquil effect on the visitors.



*image source:forumarchitects.com*





## **PLAY OF LIGHT AND SHADOW**

The arabesque represents the Quran in its multiplicitous nature.  
The dramatic use of light evokes the senses leading to tranquility.

*image source:forumarchitects.com*



*image source:forumarchitects.com*

**PLAY OF LIGHT AND SHADOW**





## ROLE OF SCALE

On the far side the imagery, the design brings forward a cosmopolitan conception of spiritual attainment like composure, a sense of oneness and a relationship with God.

*image source:forumarchitects.com*



*image source:forumarchitects.com*

## **REFLECTIONS AND IMAGERY**

In the main prayer hall, this is created with an inward tilting four-storey wall to create a sense of awe.