

Human Ecology:Space and Health Special

Assignment 2:Analysing School of Design and Environment,National University of Singapore

Saloni Sehgal
A0198835j

Site Location

The building beautifully resonates the tropical climate of Singapore and sits majestically in a lush green backdrop .

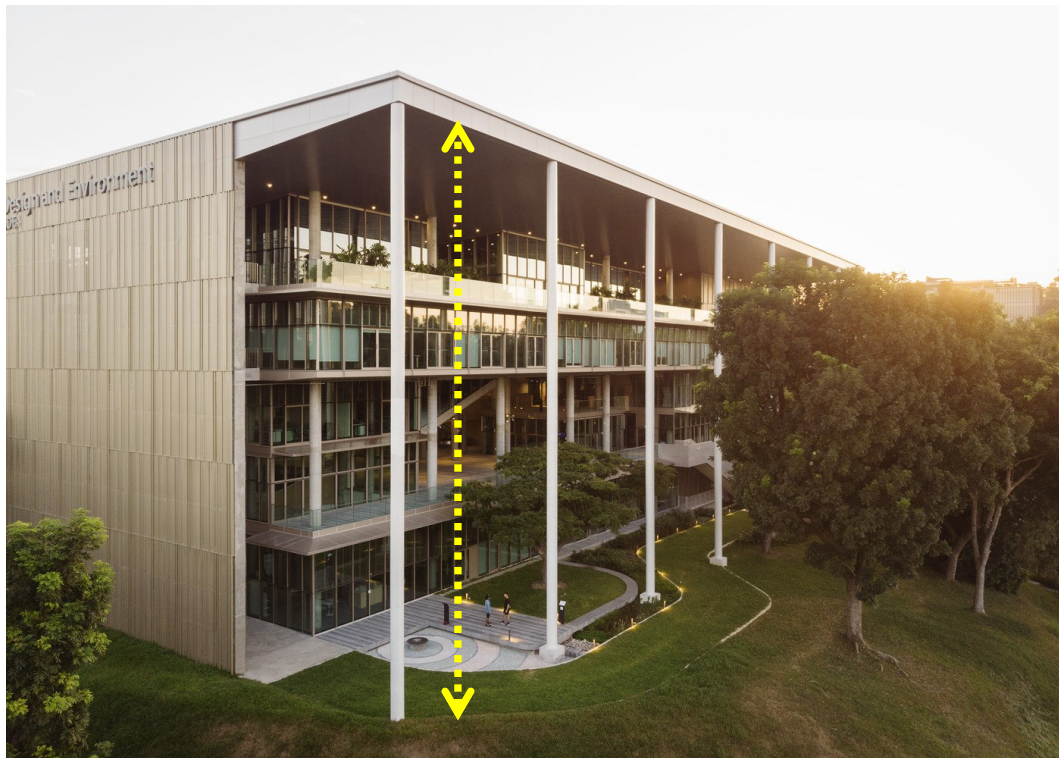
From a distance it seems as a revalidated grammar of tropical architecture. Partially hidden in a facade of green,it induces a ***sense of curiosity and sense of exploration*** in the visitor,making it a pleasant and mysterious experience for anyone viewing it from a distance. However,in the current state of accessibility to the site,the experience is not as enjoyable as it was intended to be. Walking through a sheltered pathway,with constant **thumping of the metallic floor plate** and sound of traffic from the road,the experience gets discounted for.



Building Scale and Proportion

The building is elevated from the platform making it majestic in nature.
However, for a pedestrian, the scale could be daunting as you feel lost in the expanse of the building.

However, the overall proportion of the building is balanced.
The simple form and muted tones of the building induce a ***sense of awe*** in the visitor.



Way Finding: Confounded Access?



Wayfinding to the building is a bit skewed as there is no clarity on the entrance to the building.
There is no transition in the space and suddenly the person gets confused as to which path to take.
This tampers with the *sense of continuity* for the visitor.

Way Finding: Confounded Access?



OPEN AIR STAIRCASE

MORE OPEN
CLOSE TO NATURE
SENSE OF EGO AS WE RISE UP THE STAIRS
SENSE OF SELF
SENSE OF BALANCE



LIFT LOBBY

CLAUSTROPHOBIC
NO SENSE OF ARRIVAL
FEELING OF BEING LOST
LOW SENSE OF SELF



DRIVE WAY

EVEN THOUGH ITS OPEN,NOT PREFFERED BY
PEDESTRIANS
GREEN WALLS ENHANCE CHARACTER
LOW SENSE OF SECURITY

Material Palette:Resonating Natural Milieu:Sense of Life



The material palette of the building adds the sense of life to it's visitors as one feels close to nature. Muted colors,perforated screens,concrete and glass allow ample amount of wind and light to enter the building making in tranquil for the visitor.



Material Palette: Resonating Natural Milieu

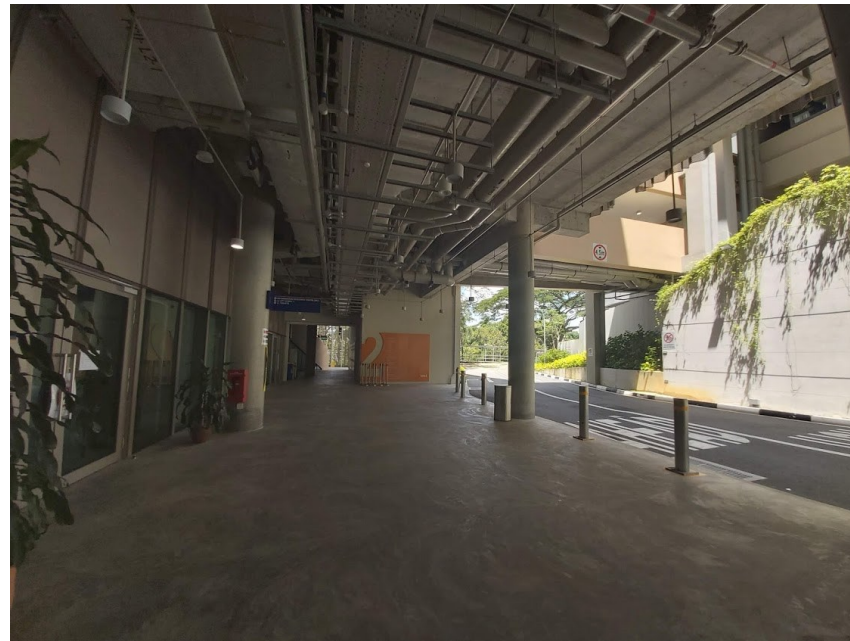


Natural light entering the building allows for the visitors to feel calm and fearless.
It enhances sense of insight.
The transparent nature of the building overlooking nature is the positive stimuli enhancing sense of safety in the visitor.

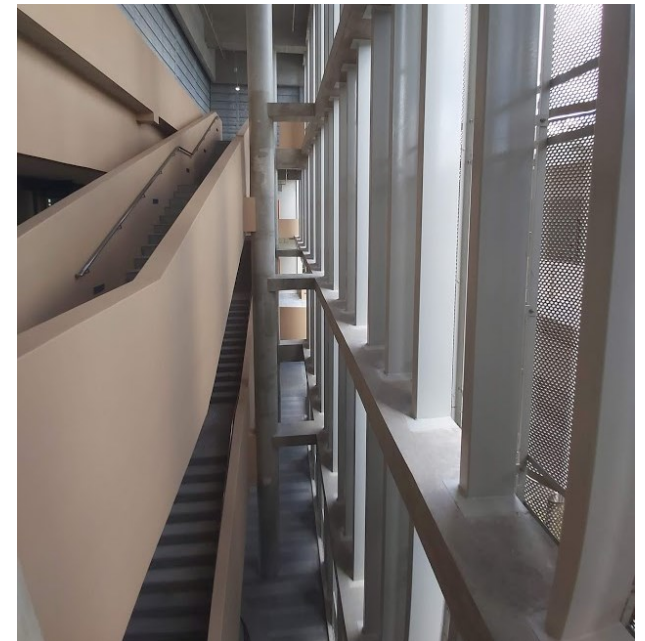
Spatial Analysis:Void Spaces:Spaces of Low Spatial Character



DINGY LOBBY SPACE
LOW SENSE OF EGO



SPACE ALONG DRIVEWAY
LOW SENSE OF SAFETY



NEGATIVE VOIDS ALONG THE SCREENS

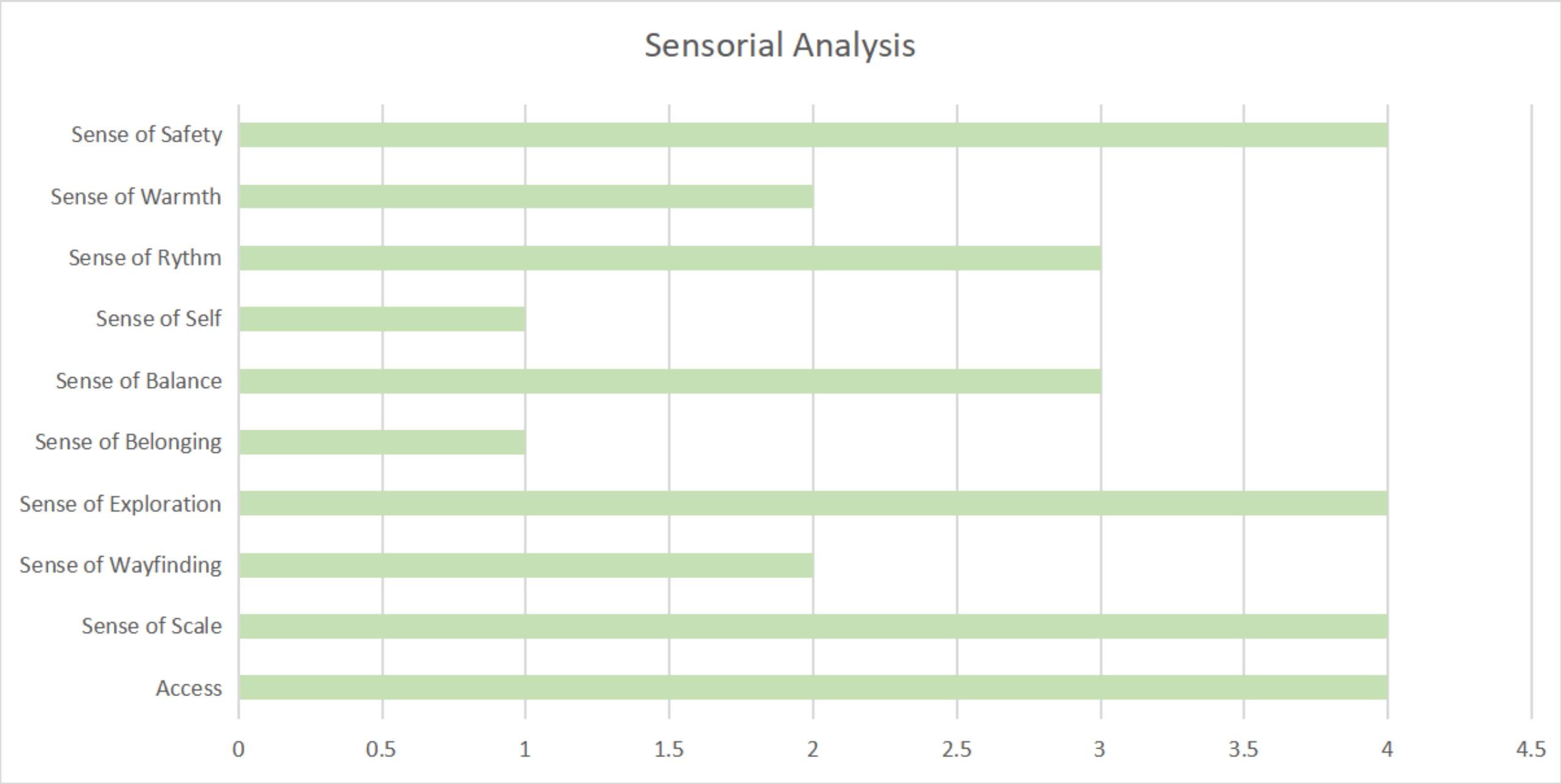
Spatial Analysis:Void Spaces:Spaces of Low Spatial Character

Inspite of being the most important social space of the building, the open plaza lacks character as the scale is immense. The expanse of the plaza doesn't allow much social integration and seems as void space.

The visitor feels lost with no **sense of belonging**.

The sense of self is diminished here.





Analytical debate for Spatial Criticism

Common questions asked-

What do they think of SDE 4 as a building for creative freedom?

Does it induce any sensorial emotion?

Does the landscape of the place enhance the ability of the building to promote wellbeing and social interactions?

In terms of spatial character does the building promote creativity or the freedom to express?

What is the overall impression of the building?

Participants were asked to rate the building on the following parameters:

Sense of belonging

Sense of pressure

Sense of life

Creative freedom

Insight

Sense of Safety

Sense of warmth

Sense of balance

Sense of wayfinding

Sense of Scale

Access

Sense of Rythm

Student 1

Ankit Sati

Masters in Urban Design 2019/2020

I don't find SDE 4 as a spot for creative freedom.

Program is spread all over the places in bits and pieces.

Only sensorial part is a sensor system or artificial system working in the building not natural or ecological aspect is constrained to one side the garden area.

Other part is underlit and stodgy.

Student 2

Einjeel Jafar Khan

Masters in Landscape Design 2018/2020

Workshop space and open plaza near the cafe are inviting and give feeling of creative freedom.

One can only look at the landscape from the distance as such from open spaces at different levels. So that does promote well being but very limited.

In terms of spatial character does the building promote creativity doesnt really promote creativity, Only few spaces do that such as the workshop area at the lowest level.

Overall impression of the building:

From outside- contemporary, inviting, intriguing

From inside- too many transient spaces, scale and volume do not inculcate intimacy.



Interview:

Dai Yuke

MA Landscape Design



Interview:

Varsha

Integrated Sustainable Design

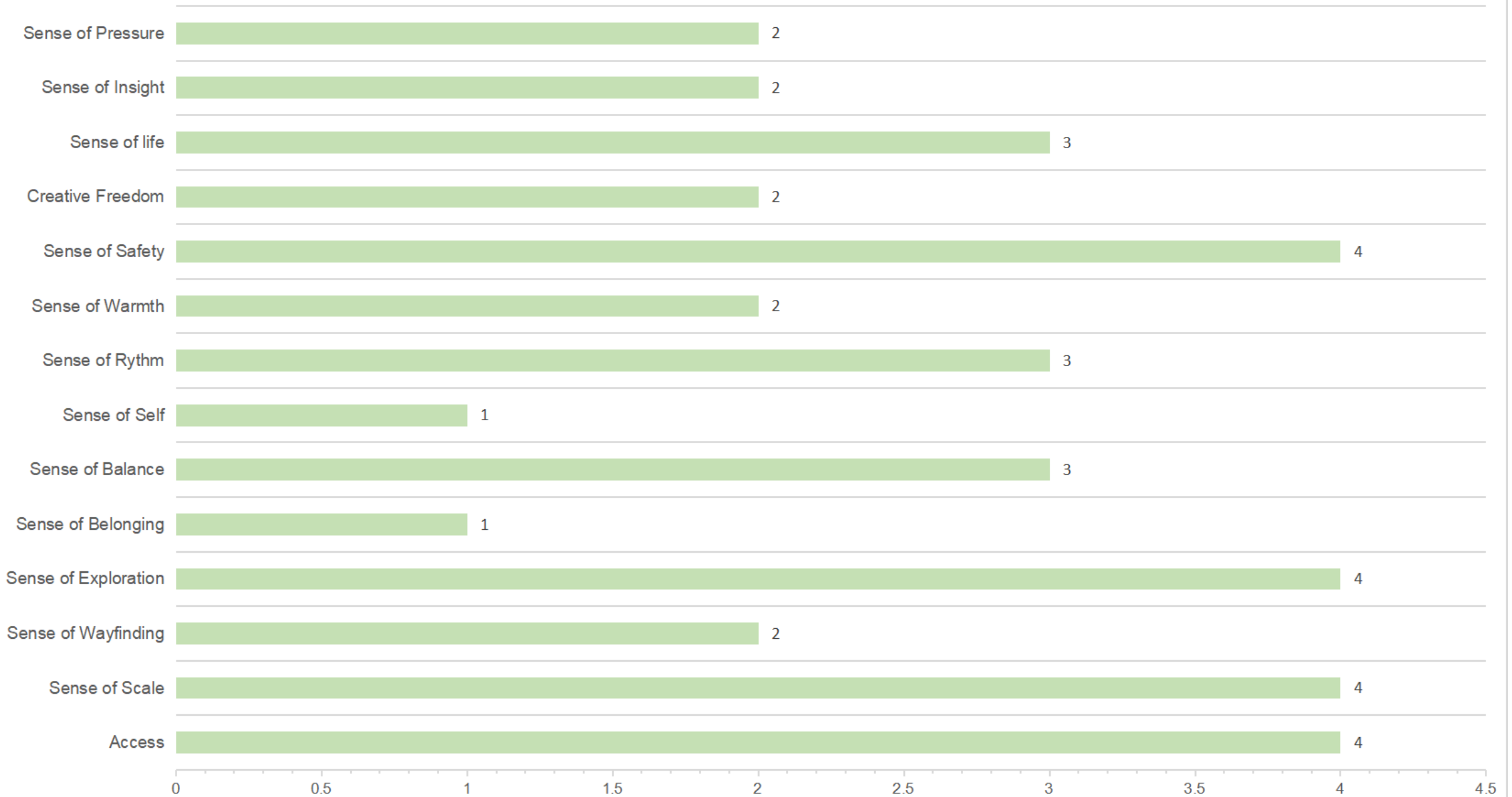


Interview:

Bao Lixia

MA Landscape Design

Sensorial Analysis on Probation



Analytical debate for Spatial Criticism

Conclusions:

Building lacks intimate spaces

From the outside it's inviting, however interior spaces are too large for creative freedom.

The space is not a stimulus for creative thinking.

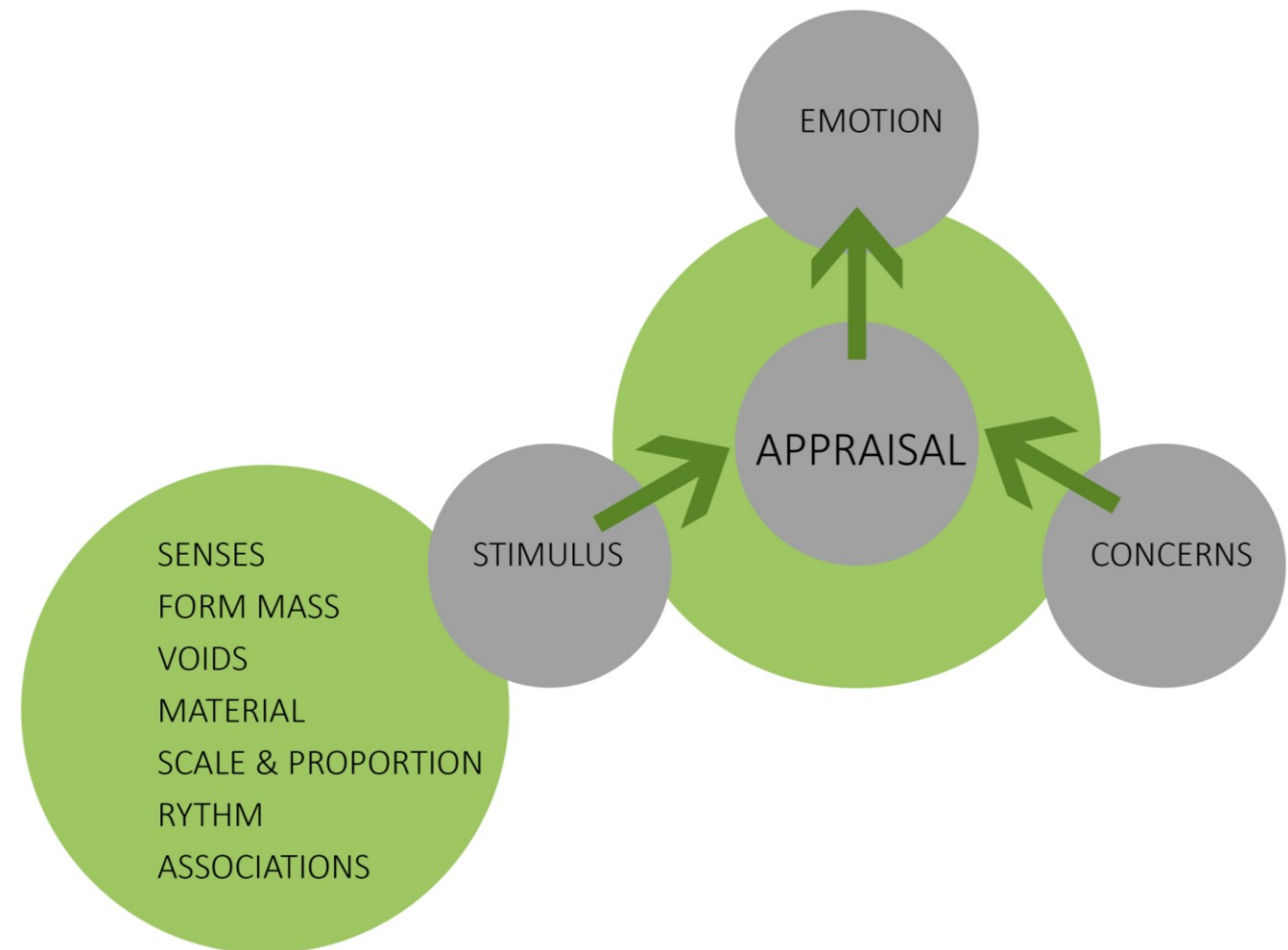
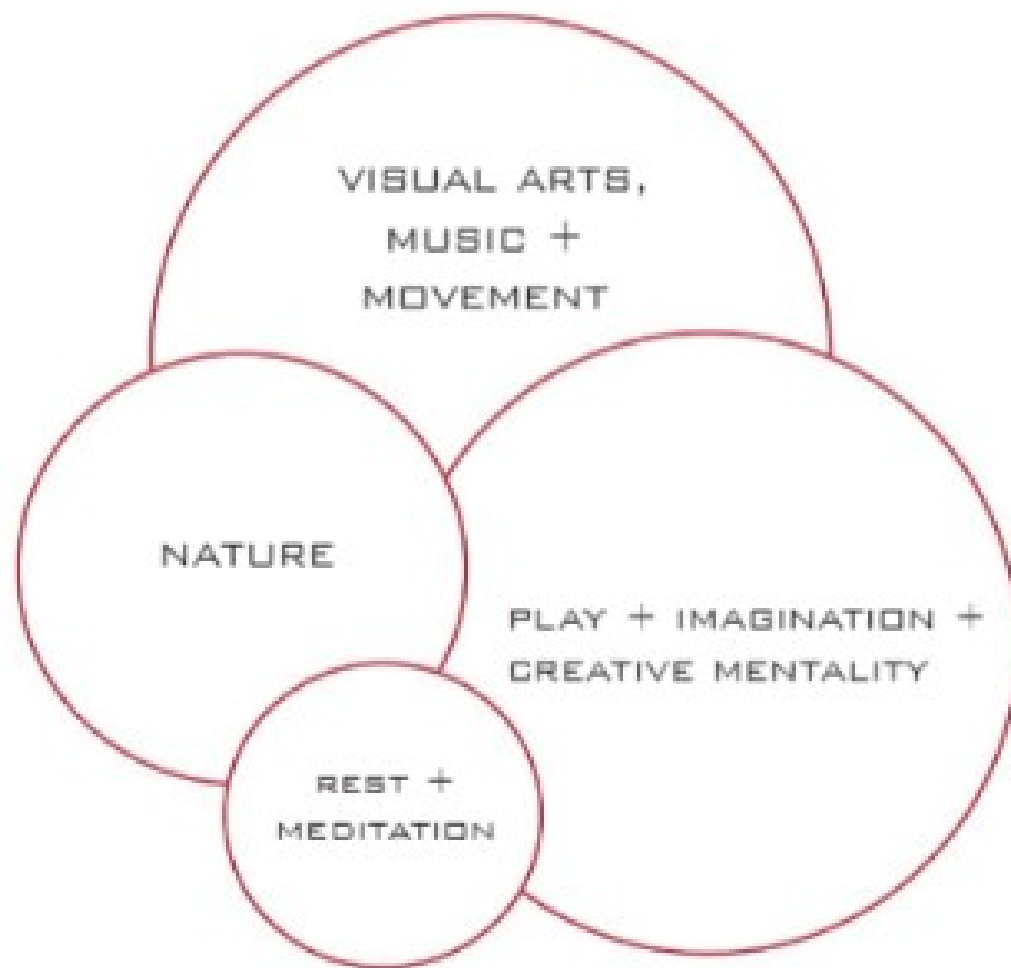
The long corridors and large public spaces inhibit sense of self.

The character within the building does not resonate the surroundings.

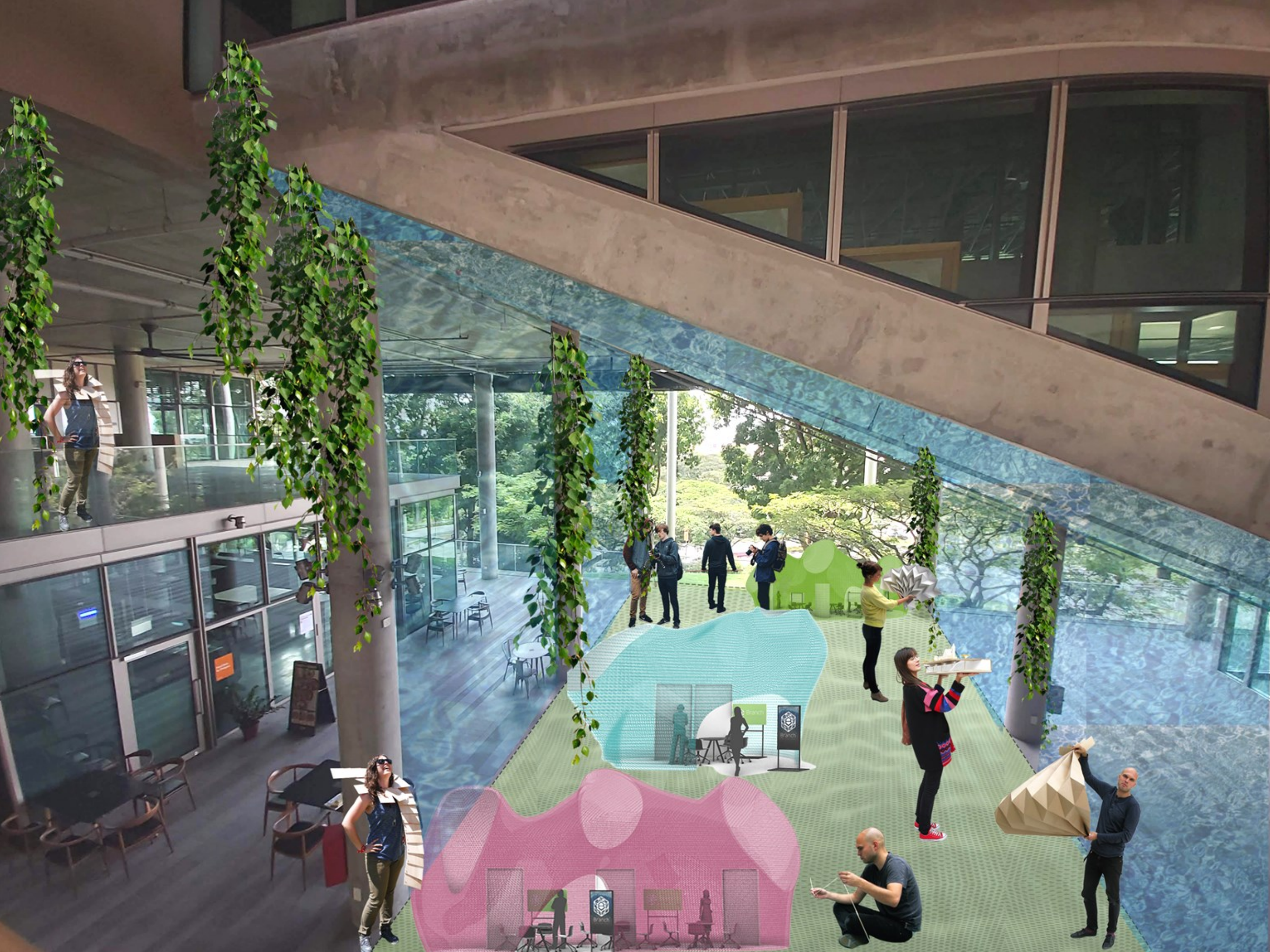
No sense of belonging in the designated spaces.

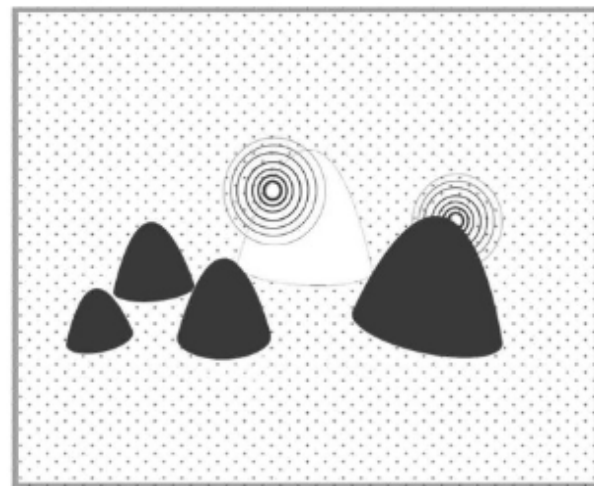
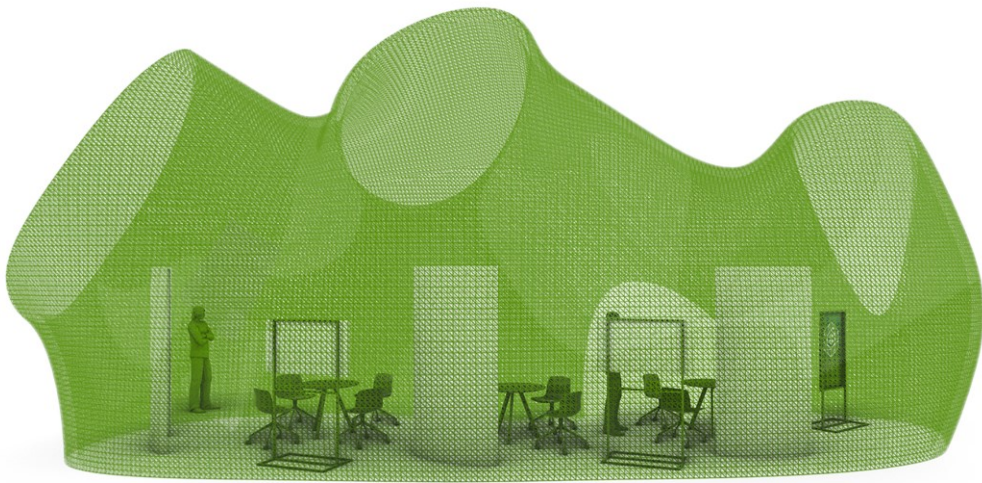
Design Concepts

- Open Plaza as an Intimate Public space for creative exploration
- Integrating Greens from Surroundings to Inside of the building
- Making the scale of the plaza intimate, for closer interactions
- Introducing Sensory Screens that stimulate the creative bug in students.
- Promoting community involvement rather than just secluded studio spaces.



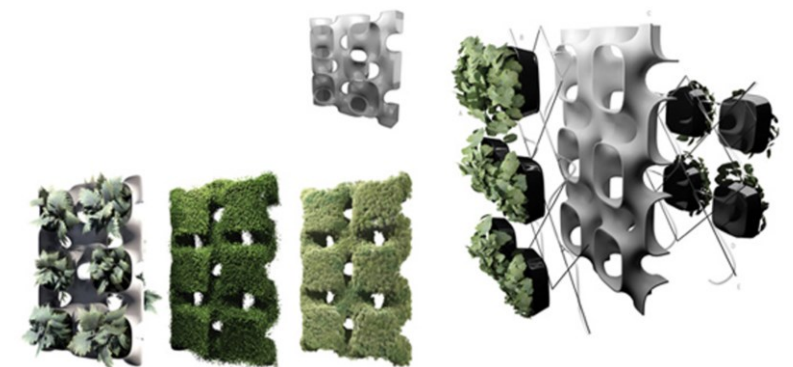




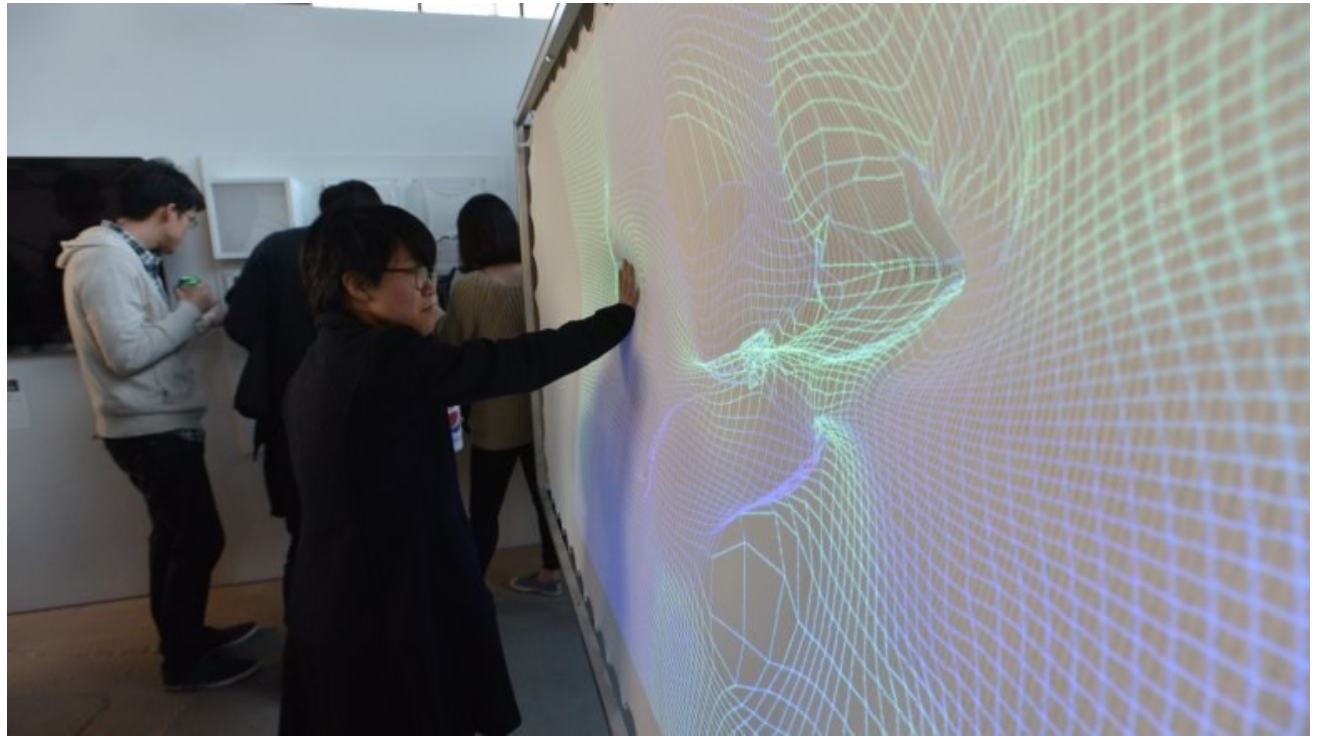
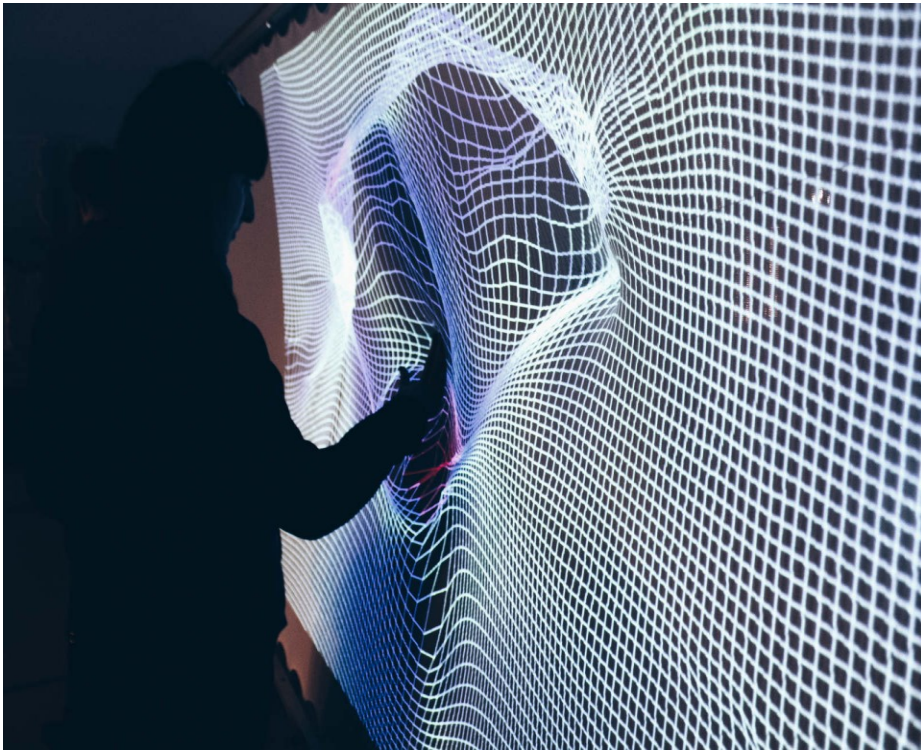


Sound proof pods for students to retreat to when studios get cumbersome.
Perforated screens to allow vision to the outskirts while maintaining privacy.
Parametric designs for pods to promote fluidity,rythm and to break the geometry of the space.

Integrating green elements in the interior of the building to break the monotony of the vast concrete and for a calming,soothing effect.



Active Phytoremediation Wall System is a modular system of pods, housing hydroponic plants.
Its main purpose is to encourage airflow and contribute to the quality of life through its air cleaning capacities.



Social Sensory surfaces

This interaction between two different qualities through this sense creates a memory and feeling through the responses of the body and mind.

Parametric,porous screens for space segregation.

This allows for more creative fluidity in the plaza.



Floor mounds to allow relaxation spaces.

These resonate the fluidity of the pods and the screens completely breaking the rigid geometry of the space.

This enhances sense of rhythm in the space making it a close loop integrated space.

Taking example from the natural mounds in nature,these could enhance the proximity to nature and also help instating sense of exploration due to uneven,undulating surfaces.

THANKYOU